

# DEMOGRAPHIC PROFILE



Chatham is a growing community with a 2013 population estimate of 12,077.

48.3% Male

51.7% Female

61.9% Married

11.7% Divorced

Median Age 35.8

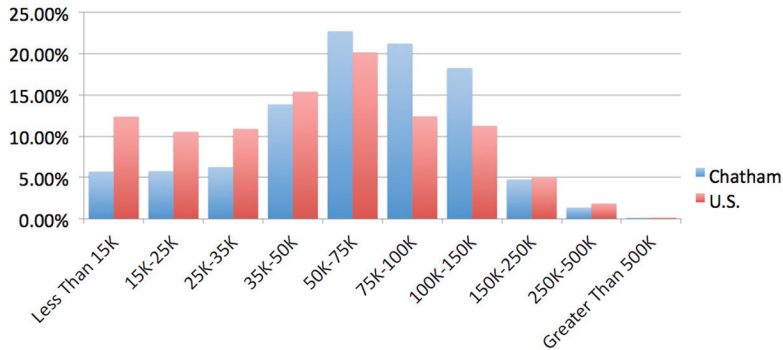
Median Household Income \$76,903

Poverty Level 4.0%

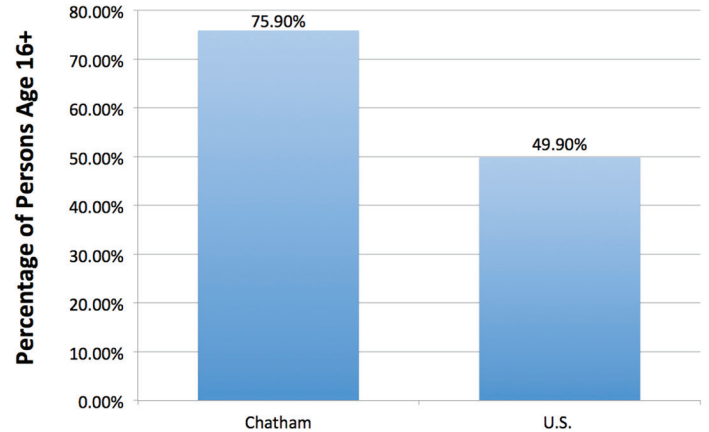
Population Change 2000-2010 +34%

\*Data sources: Quickfacts from U.S. Census Bureau and Esri total population forecasts for 2012

**Estimated Households by Income Level, 2012**



**Population (over 16 years of age) in Labor Force, 2010**



\*Source: Sperling's Best Places  
<http://www.bestplaces.net/economy/city/illinois/chatham>

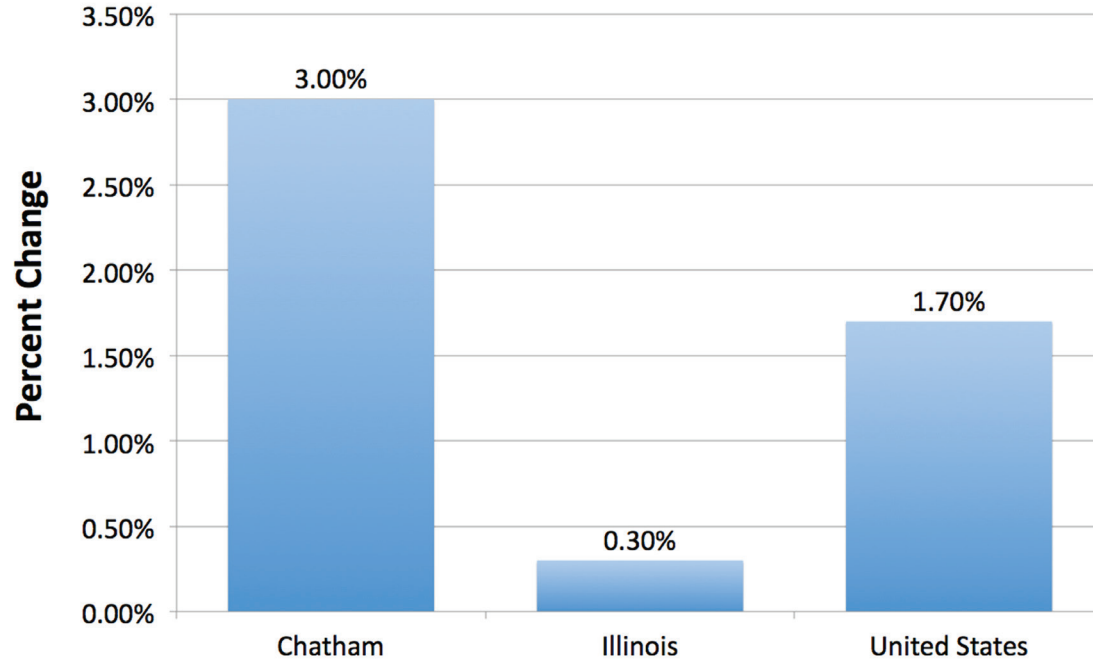
\*Source: Bureau of Labor Statistics  
[www.bls.gov](http://www.bls.gov)

Note: All data is accurate as of September 2013.





## Population Change, 2010-2012



\*Source: QuickFacts from US Census Bureau

Note: All data is accurate as of September 2013.